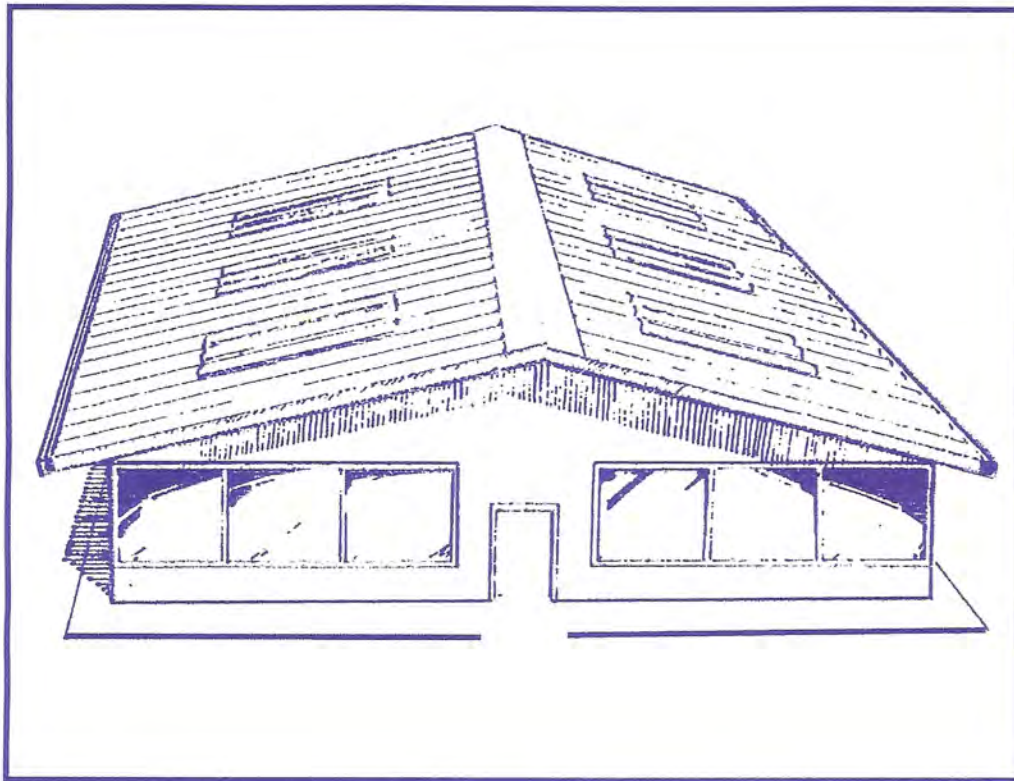


WEATHERTITE COATINGS Inc.

BASE COAT



Base Coat is an elastomeric, water-proofing roofing material. Ideal for reroofing and new roofs, this rubber-like film encapsulates and seals surfaces to prevent leaks. It can be used for industrial, commercial, residential, and agricultural applications.

The copolymer acrylic liquid compound produces a tough, durable finish that forms a barrier against weather and chemical deterioration.

Base Coat's elastic, self-flashing film conforms to any shape. The film elongates up to 400% of its original length without cracking.

It withstands the most severe weather conditions, remaining pliable to -20°F, and responds to surface expansion and contraction.

Base Coat is easy to apply with a brush, roller, or heavy-duty spray equipment.

FEATURES

Elastomeric

Base Coat's elastic film can be bent, twisted or stretched repeatedly without failure. It has a high-film build for superior durability and versatility. Its rubber-like consistency permits conformity to any shape. Base Coat remains flexible down to -20°F.

Waterproof

A seamless, self-flashing weather barrier, Base Coat prevents water leakage. It seals surfaces and bridges cracks and defects.

Adhesive

Adhesion to any properly prepared surface is outstanding. Additional layers of Base Coat applied to a previous layer are impossible to separate at the junction of each layer.

Chemical & Weather Resistant

Base Coat is resistant to common industrial chemicals, acid rain, and other VOC compounds. It exceeds 2,000 hours of accelerated weathering exposure using ultraviolet light and water condensation.

10 Year Warranty

Base Coat is warranted for ten years from the date of application.